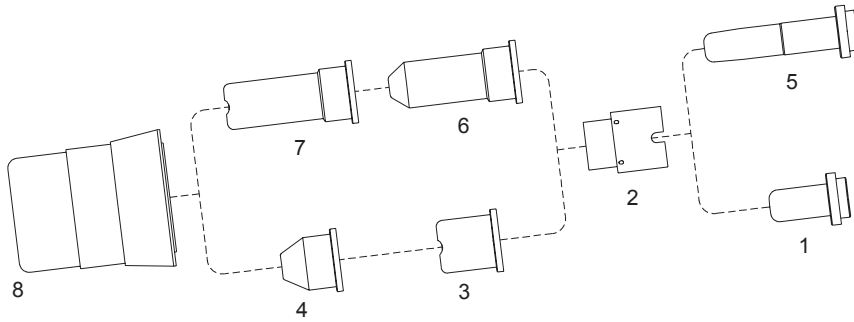
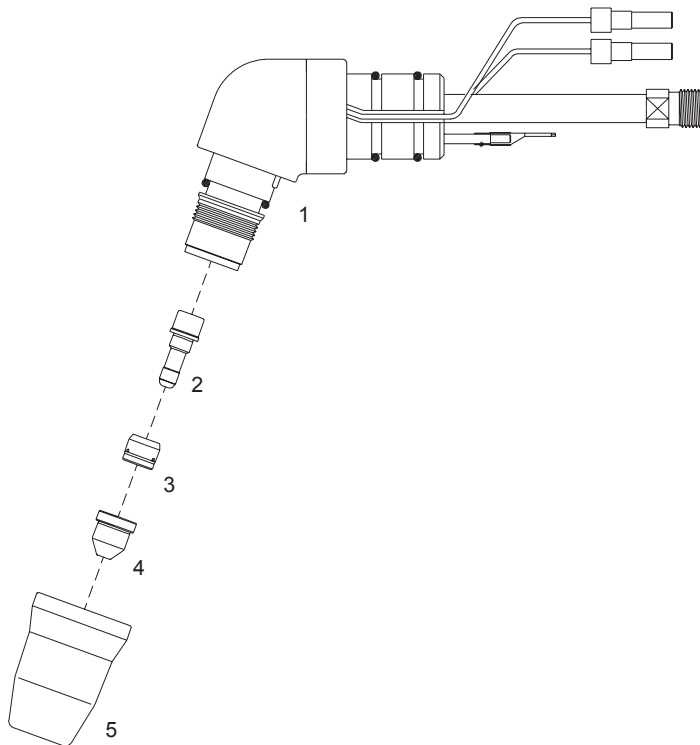


**CEBORA® P 30®**  
ART. 920 - 925 - 936



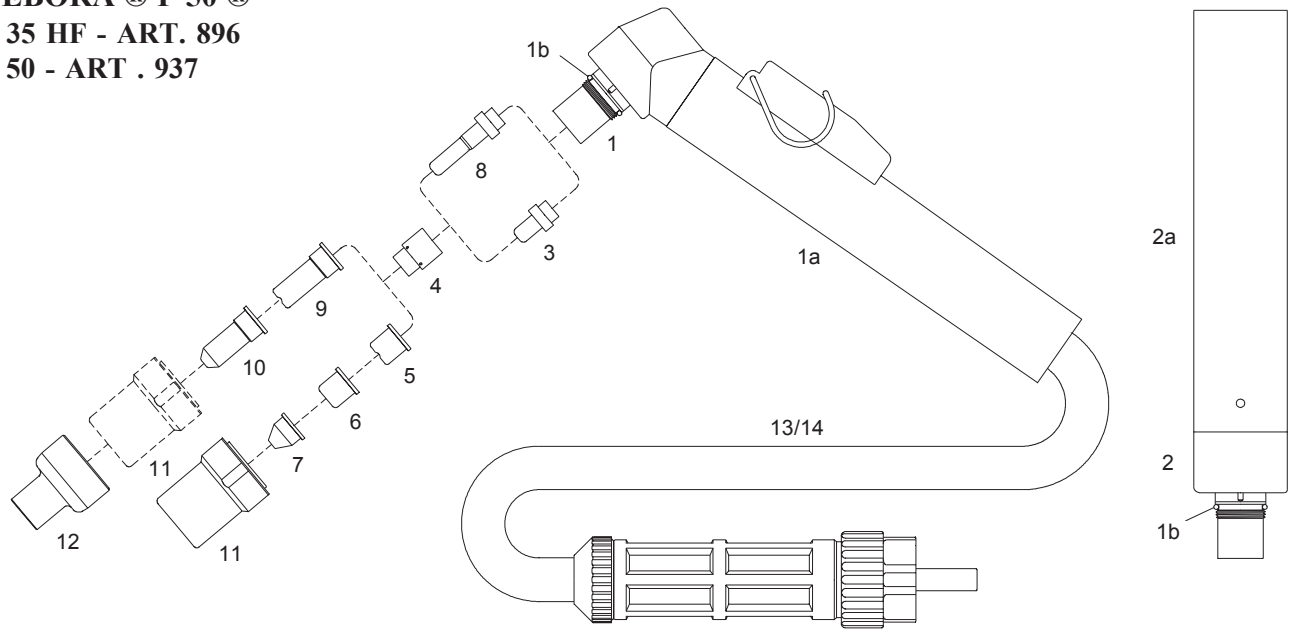
Item	Ref.	Code	Description
1	1520- Zr 1520- Hf	52010 52510	Electrode - Zr. Electrode - Hf.
2	1510	60002	Swirl ring
3	1304	51100	Tip
4	1305	51098	Conical tip (Lo - Amp.)
5	1519- Zr 1519- Hf	52011 52511	Long electrode - Zr. Long electrode - Hf.
6	1306	51101	Long conical tip (Lo - Amp.)
7	1370	51102	Long tip
8	5.710.120	60321	Nozzle retaining cap

**CEBORA® CP-40®**



Item	Ref.	Code	Description
1	1359	01040	Hand torch head
2	1516	52545	Electrode
3	1507	60007	Swirl ring
4	1290	51086	Tip $\varnothing$ 0.7
5	1906	60323	Nozzle retaining cap

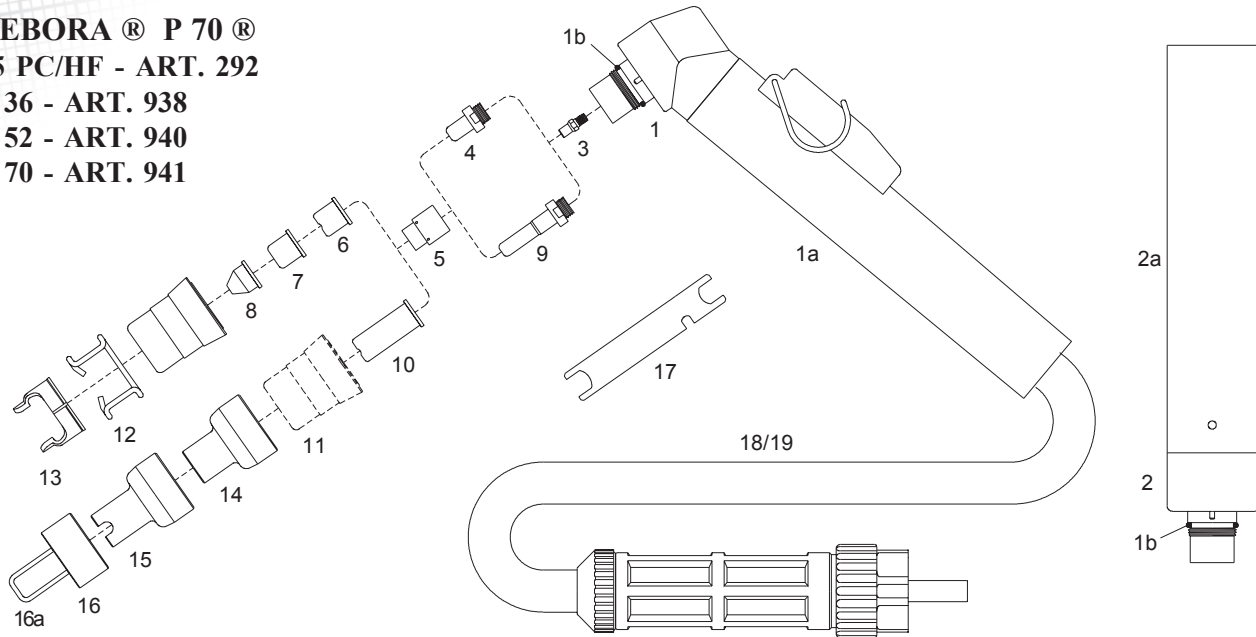
**CEBORA® P 50®**  
**P 35 HF - ART. 896**  
**P 50 - ART. 937**



Item	Ref.	Code	Description
	1526	03050/C	Hand torch complete with 6 mts cable (1/8" connection)
	1574	03051/C	Hand torch complete with 6 mts cable (central connector)
		03150/C	Hand torch complete with 12 mts cable (1/8" connection)
		03151/C	Hand torch complete with 12 mts cable (central connector)
		03400	Machine torch complete with 6 mts cable (1/8" connection)
		03401	Machine torch complete with 6 mts cable (central connector)
		03500	Machine torch complete with 12 mts cable (1/8" connection)
		03501	Machine torch complete with 12 mts cable (central connector)
1	1352	01000	Hand torch head
1a	1356	03280/C	Handgrip with microswitch
1b		01000.60	O - Ring
2		03300	Machine torch head
2a		03310	Machine handle
3	1521- Zr	52012	Electrode - Zr.
	1521- Hf	52512/L	Electrode - Hf.
4		60001	Swirl ring
5	1304	51100	Tip ø 1.0
	1396	51095	Tip long life ø 1.0
		51100/S	Tip long life ø 1.1
6		51099	Flat tip ø 1.0.
7	1305	51098	Conical tip ø 1.0 (Lo - Amp.)
8	1518- Zr	52013	Extended electrode - Zr.
	1518- Hf	52513/L	Extended electrode - Hf.
9	1370	51102	Extended tip, ø 1.0
	1395	51095/L	Extended tip, long life ø 1.0
		51102/S	Extended tip, long life ø 1.1
10	1306	51101	Extended conical tip ø 1.0 (Lo - Amp.)
11	5.710.121	60320	Nozzle retaining cap
12		51965	Shield cup, hand ( for extended tips 51095/L, 51102/S and 51101 )
13	1344	03240	Air and power cable 6 mts 1/8" - Hand torch
		03250	Air and power cable 12 mts 1/8" - Hand torch
14		03320	Air and power cable 6 mts 1/8" - Machine torch
		03330	Air and power cable 12 mts 1/8" - Machine torch

\* CIRCLOCUTTING ATTACHMENT : See page # 70

**CEBORA® P 70®**  
**35 PC/HF - ART. 292**  
**P 36 - ART. 938**  
**P 52 - ART. 940**  
**P 70 - ART. 941**

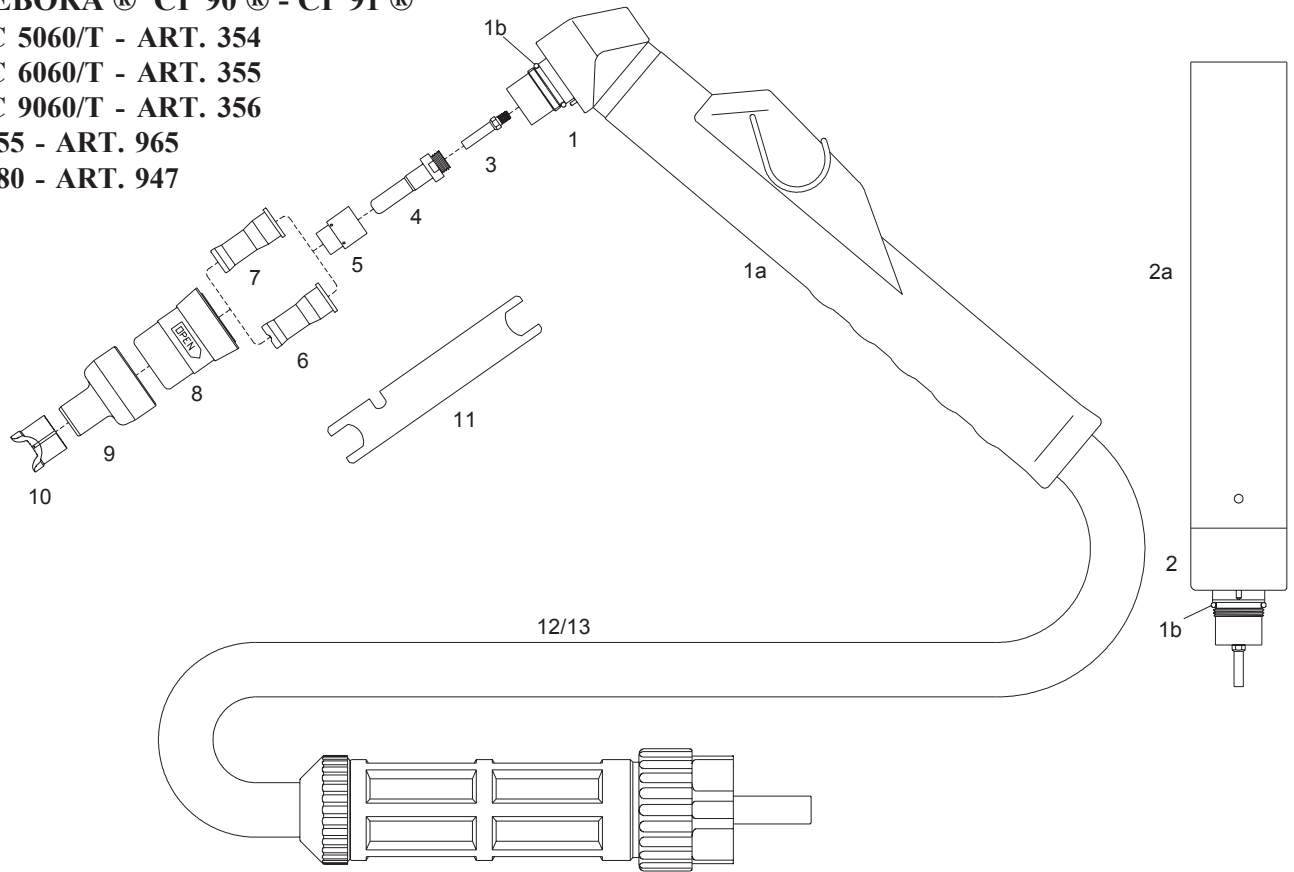


Item	Ref.	Code	Description
	1564	03070/CS	Hand torch complete with 6 mts cable ( 1/8" connection )
	1573	03071/CS	Hand torch complete with 6 mts cable ( central connector )
	1573.20	03171/CS	Hand torch complete with 12 mts cable ( central connector )
	1563	03470/S	Machine torch complete with 6 mts cable ( 1/8" connection )
	1566	03471/S	Machine torch complete with 6 mts cable ( central connector )
	1566.20	03571/S	Machine torch complete with 12 mts cable ( central connector )
1	1351	01070	Hand torch head
1a	1356	03280/C	Handgrip with microswitch
1b	3.160067	01000.60	O - Ring
2	1349	03370	Machine torch head
2a	3.055.623	03310	Machine handle
3	3.065204	01070.42	Diffusor
4	1402	52551	Electrode
5		60001	Swirl ring
6	1309	51100.09	Tip $\varnothing$ 0.9 - 35A
	1396	51095	Tip long life $\varnothing$ 1.0 - 50A
		51100/S	Tip long life $\varnothing$ 1.1 - 60A
		51096	Tip long life $\varnothing$ 1.2 - 70A
7	1308	51100.12	Tip $\varnothing$ 1.2 - 70A
		51099	Flat tip $\varnothing$ 1.0
		51099.12	Flat tip $\varnothing$ 1.2
8	1305	51098	Conical tip $\varnothing$ 1.0 (Lo - Amp.)
		51098.12	Conical tip $\varnothing$ 1.2
9	1368	52553	Extended electrode
10	1366	51102.09	Extended tip $\varnothing$ 0.9 - 35A
	1395	51095/L	Extended tip long life $\varnothing$ 1.0 - 50A
		51102/S	Extended tip long life $\varnothing$ 1.1 - 60A
		51096/L	Extended tip long life $\varnothing$ 1.2 - 70A
11	5.710.171	60321	Nozzle retaining cap
12	1394	51901	Spacer spring
13	1405	60363	Double pointed spacer
14		51970	Shield cup, hand (for extended tips 51102.09 and 51095/L)
15		51971	Spacer for contact cutting, hand (for extended tips 51102/S and 51096/L)
16		60382	Spacer complete with springs
16a		60383	Spare springs ( 20 pcs. )
17	3.045.012	60368	Wrench for electrode
18	1344	03240/S	Air and power cable 6 mts 1/8" - Hand torch
		03250/S	Air and power cable 12 mts 1/8" - Hand torch
19		03320/S	Air and power cable 6 mts 1/8" - Machine torch
		03330/S	Air and power cable 12 mts 1/8" - Machine torch

\* CIRCLE CUTTING ATTACHMENT : See page # 70

**CEBORA® CP 90® - CP 91®**

- PC 5060/T - ART. 354**
- PC 6060/T - ART. 355**
- PC 9060/T - ART. 356**
- P 55 - ART. 965**
- P 80 - ART. 947**

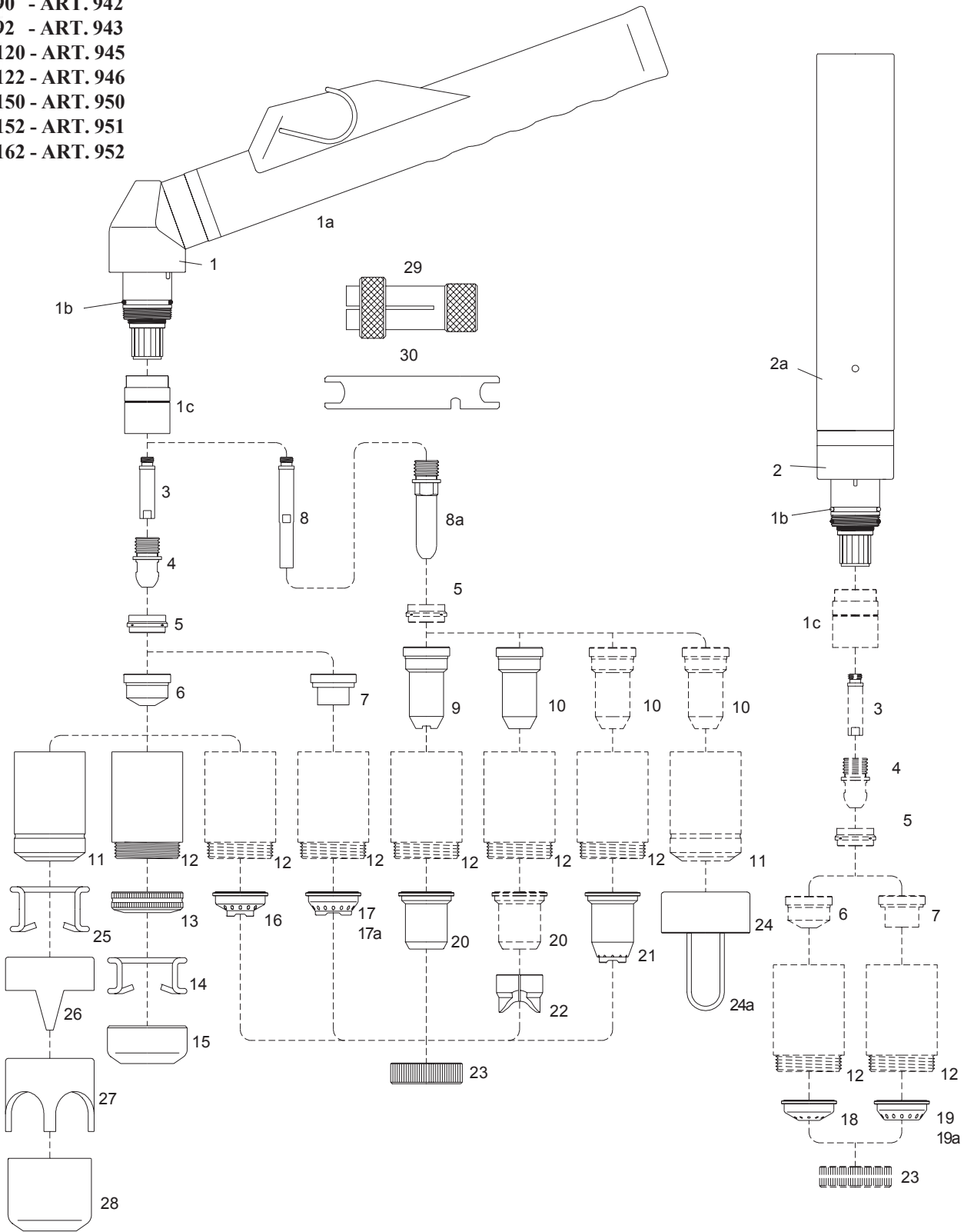


Item	Ref.	Code	Description
	1214	03091/CS	Hand torch complete with 6 mts cable ( central connector )
	1214.20	03191/CS	Hand torch complete with 12 mts cable ( central connector )
	1218	03491/S	Machine torch complete with 6 mts cable ( central connector )
	1218.20	03591/S	Machine torch complete with 12 mts cable ( central connector )
	1215	03090/CS	Hand torch complete with 6 mts cable ( 1/8" connection )
1	1358	01090	Hand torch head
1a		04280/C	Handgrip with microswitch
1b	3.160.067	01000.60	O - Ring
2	1348	03390	Machine torch head
2a	3.055.623	03310	Machine handle
3		01090.42	Diffusor
4	1368	52553	Electrode
5		60001	Swirl ring
6		51090	Tip long life ø 1.0 - 20-50A (for use with item. 8 only)
7		51092	Tip long life ø 1.2 - 50-70A (for use with item. 8 only)
		51093	Tip long life ø 1.3 - 70-90A (for use with item. 8 only)
8		60322	Nozzle retaining cap (for use with item. 6-7 only)
9		51972	Shield cup, hand
10		51973	Spacer for contact cutting, hand
11	3.045.012	60368	Wrench for electrode
12		03093/S	Air and power cable 6 mts 1/8" - Hand torch ( central connector )
		03193/S	Air and power cable 12 mts 1/8" - Hand torch ( central connector )
13		03493/S	Air and power cable 6 mts 1/8" - Machine torch ( central connector )
		03593/S	Air and power cable 12 mts 1/8" - Machine torch ( central connector )
N/S		03240/S	Air and power cable 6 mts 1/8" - Hand torch ( 1/8" connection )

\* CIRCLE CUTTING ATTACHMENT : See page # 70

**CEBORA® P150® - CP 160®**

- P 90 - ART. 942
- P 92 - ART. 943
- P 120 - ART. 945
- P 122 - ART. 946
- P 150 - ART. 950
- P 152 - ART. 951
- P 162 - ART. 952



**Complete Torches for CP 160®**

Item	Ref.	Code	Description
	1226	04053/CS	Hand torch complete with 6 mts cable (central connector)
	1226.20	04153/CS	Hand torch complete with 12 mts cable (central connector)
	1228	08679	Machine torch complete with 6 mts shielded cable (central connector)
	1228.20	08685	Machine torch complete with 12 mts shielded cable (central connector)

**CEBORA® P150® - CP 160®**

Item	Ref.	Code	Description
	1571	04050/CS	Hand torch complete with 6 mts cable (1/8" connection)
	1576	04051/CS	Hand torch complete with 6 mts cable (central connector)
	1578	04151/CS	Hand torch complete with 12 mts cable (central connector)
	1529	04400/S	Machine torch complete with 6 mts cable (1/8" connection)
	1577	04401/S	Machine torch complete with 6 mts cable (central connector)
	1579	04501/S	Machine torch complete with 12 mts cable (central connector)
1	1353	02000	Hand torch head
1a		04280/C	Handgrip with microswitch
1b	1398	02000.60	O - Ring
1c		60080	Front insulator
2	1354	04300	Machine torch head
2a	3.055.623	03310	Machine handle
3	1378	05004	Diffusor
4	1376	52540	Electrode
5	1377	60020	Swirl ring
6	1371	51140/S	Tip long life ø 1,1
	1372	51141/S	Tip long life ø 1,35
	1373	51142/S	Tip long life ø 1,6
	1374	51143/S	Tip long life ø 1,8
	1375	51144	Gouging tip ø 3,0
7		51410	Contact tip ø 1,35
		51411	Contact tip ø 1,6
		51412	Contact tip ø 1,8
8		05005	Extended Diffusor
8a	1517	52549	Extended electrode
9	1369	51148	Contact extended tip max. 50A
10		51148.13	Extended tip ø 1,35 - 90A
		51148.16	Extended tip ø 1,6 - 120A
		51148.18	Extended tip ø 1,8 - 150A
11	1389	60330	Nozzle retaining cap
12		60350	Contact nozzle retaining cap,
		60350/V	Contact nozzle retaining cap, Max.life
13		51952	Spring holder protection nut
14		51911	Spacer spring for code 51952
15		51953	Gouging spacer
16		51950	Spacer for contact cutting, hand
17		51930	Spacer for contact cutting, hand
17a		51920	Spacer for contact cutting, hand
18		51951	Shield cup, machine
19		51935	Shield cup, machine
19a		51925	Shield cup, machine
20		51957	Shield cup, hand ( max. 50A )
21		51958	Spacer for contact cutting, hand
22		51974	Spacer for extended tips High Amp.
23		51959	Locking nut
24		60380	Spacer complete with springs
24a		60381	Spare springs
25	1386	51910	Spacer spring
26	1408	60370	Double pointed spacer
27		60371	Crown spacer
28	1406	60373	Gouging spacer
29	1509	60369	Extractor for swirl ring
30	3.045.010	60368	Wrench for electrode
		04240/S	Air and power cable 6 mts 1/8" - Hand torch
		04250/S	Air and power cable 12 mts 1/8" - Hand torch
		04320/S	Air and power cable 6 mts 1/8" - Machine torch
		04330/S	Air and power cable 12 mts 1/8" - Machine torch
* SHIELDED TORCHES			: See page # 66
* CIRCLE CUTTING ATTACHMENT			: See page # 70